

Meetings & Events in the heart of the city...





# Ten Square Hotel Belfast

Ten Square is one of Northern Ireland's premier hotels, located on the historic site of Yorkshire House, which was built in 1862 and pre-dates Belfast City Hall which opened in 1906. The building has always been at the heart of the community, having previously been a Victorian linen warehouse and a General Post Office.

The premises, which are steeped in history, were turned into an award-winning hotel at the turn of the millennium, and whether for business or pleasure, Ten Square offers the ultimate Belfast hospitality, in an unrivalled location.

This commitment to excellence is evident in both the accommodation and in the food and drink served. We have fostered strong working relationships with local suppliers to ensure that our menus feature the finest local produce from award-winning providers. Our management team consistently seek customer feedback to help refine our hospitality offering in line with evolving tastes and preferences.



We offer a range of packages and menus, that can all be tailored to suit your requirements. Our Chefs love to be creative and we work closely with clients to meet and exceed expectations.

Our staff are passionate and dedicated to achieving excellence. Each individual member of our team has undertaken extensive customer service training.

Every event is allocated a dedicated Function Manager and this single point of contact helps to ensure that preparations are hassle-free and that your tailored event runs seamlessly.

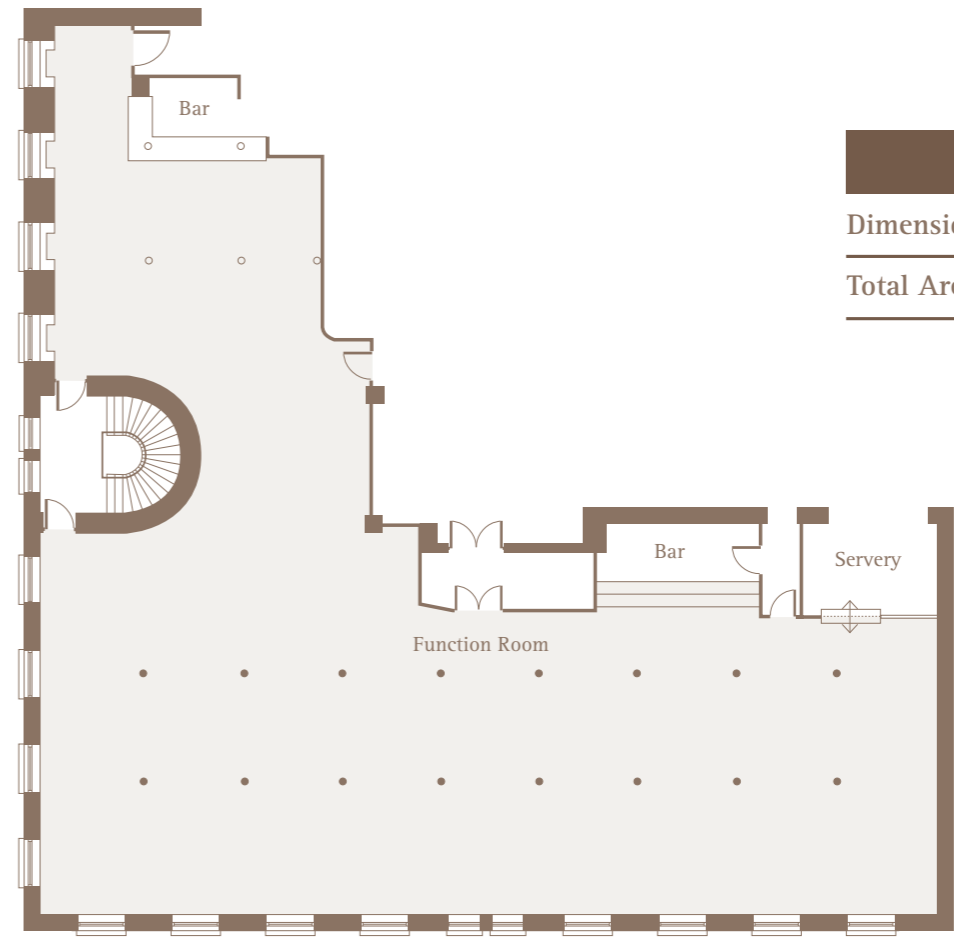
We enjoy providing the highest standard of service and being part of fantastic events, whatever the size or style.

Ten Square Hotel - the perfect location for meetings and events.





# Linenhall Suite



## KEY FACTS

Dimensions	28x10m / 93x30ft
Total Area (Inc Bar)	390m <sup>2</sup> / 4,200ft <sup>2</sup>







The Linenhall Suite is a naturally lit, versatile space, ideal for hosting any event, from corporate functions to glamorous social occasions. The suite features a private pre-function area with 2 bars, air conditioning, remote controlled screens and dancefloor, perfect for both networking and drinks receptions for up to 360 guests.

The Linenhall Suite is equally at home hosting your conference or business meeting, comfortably holding from 20 to 260 attendees. The pre-function space doubles perfectly as a registration area, and we can provide a host of audio visual equipment.



Our dedicated and experienced Conferencing and Banqueting Team will be on hand every step of the way, in the planning and smooth execution of your event and will be available at all times to assist with whatever you may need.

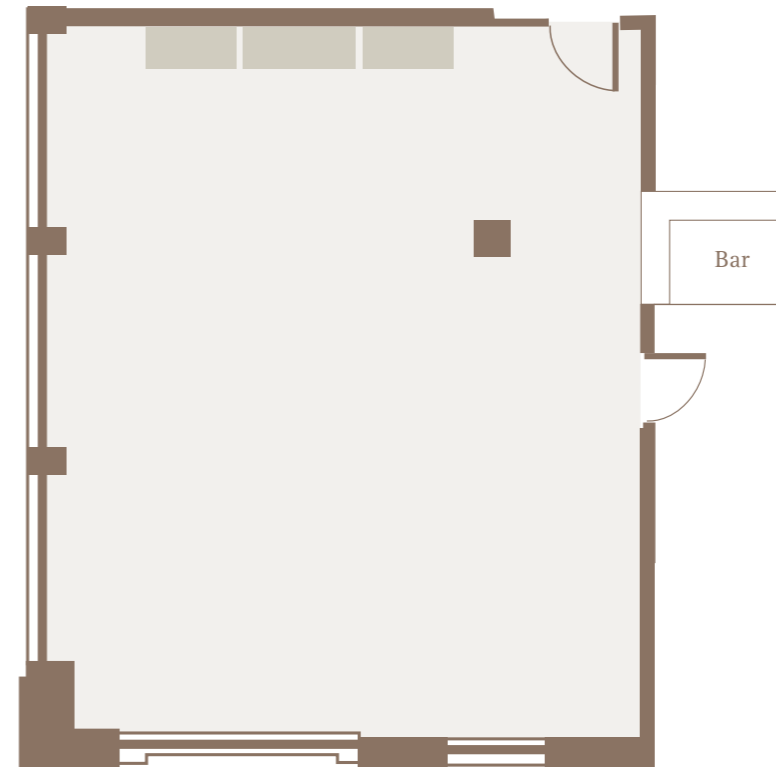
Linenhall Suite - Available Room Layout Styles & Capacities.  
Day Delegate Rate also available.

					
Boardroom	Theatre Style	Cabaret	U-Shape	Banquet	Reception
60 Guests	260 Guests	150 Guests	40 Guests	200 Guests	360 Guests





# Flax Suite



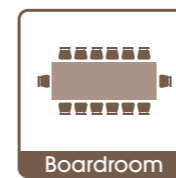
KEY FACTS	
Dimensions	7.9x9.8m / 26x32ft
Total Area (Inc Bar)	77m <sup>2</sup> / 833ft <sup>2</sup>



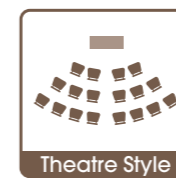
This naturally-lit business space is specifically designed with business clients in mind.

The Flax Suite features in-room bar facilities, air conditioning and is fully equipped with a state-of-the-art 60-inch curved TV.

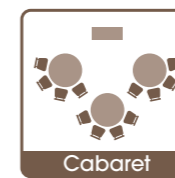
Flax Suite - Available Room Layout Styles & Capacities.  
Day Delegate Rate also available.



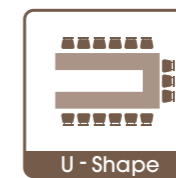
25  
Guests



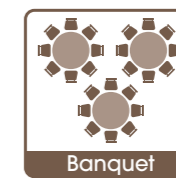
50  
Guests



24  
Guests



25  
Guests



40  
Guests

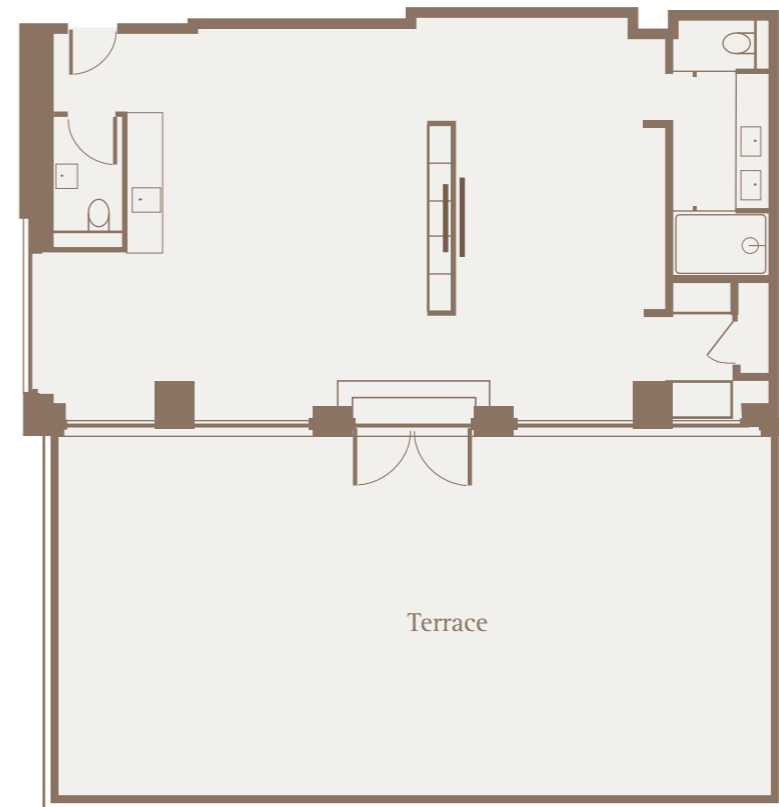


50  
Guests





# Jaffe Penthouse



## KEY FACTS

Dimensions 8.8x6.1m / 28.10x20ft

Total Area 53.7m<sup>2</sup> / 578ft<sup>2</sup>

## Terrace

Dimensions 12.2x6.2m / 40x20ft

Total Area 76m<sup>2</sup> / 814ft<sup>2</sup>

Pop Up Bar – Available On Request  
(Surcharge Applicable)

Perched high above City Hall with commanding views of the Belfast skyline and the hills beyond. The Jaffe Penthouse provides 578 sq. ft. of luxuriously appointed living space.

This most prestigious address also allows for hosting the most important and special of occasions upon the additional 800 sq. ft. of roof top terrace.

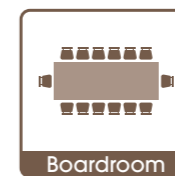
Canapes and Champagne for gatherings of up to 40 guests.

The height of entertainment, in the heart of the city.

An exquisitely appointed suite, The Jaffe Penthouse boasts a complete range of luxury fixtures and fittings, including state-of-the-art entertainment facilities and of course, spectacular views across the heart of the City, virtually within touching distance of City Hall itself. A very special addition to Ten Square's event space offering and the natural choice for private meetings or those extra special occasions.



## Jaffe Penthouse - Available Room Layout Styles & Capacities



Boardroom

10  
Guests



Reception

40  
Guests





# The Loft Cocktail Lounge

## KEY FACTS

Dimensions From 3.7m to 27.5m max

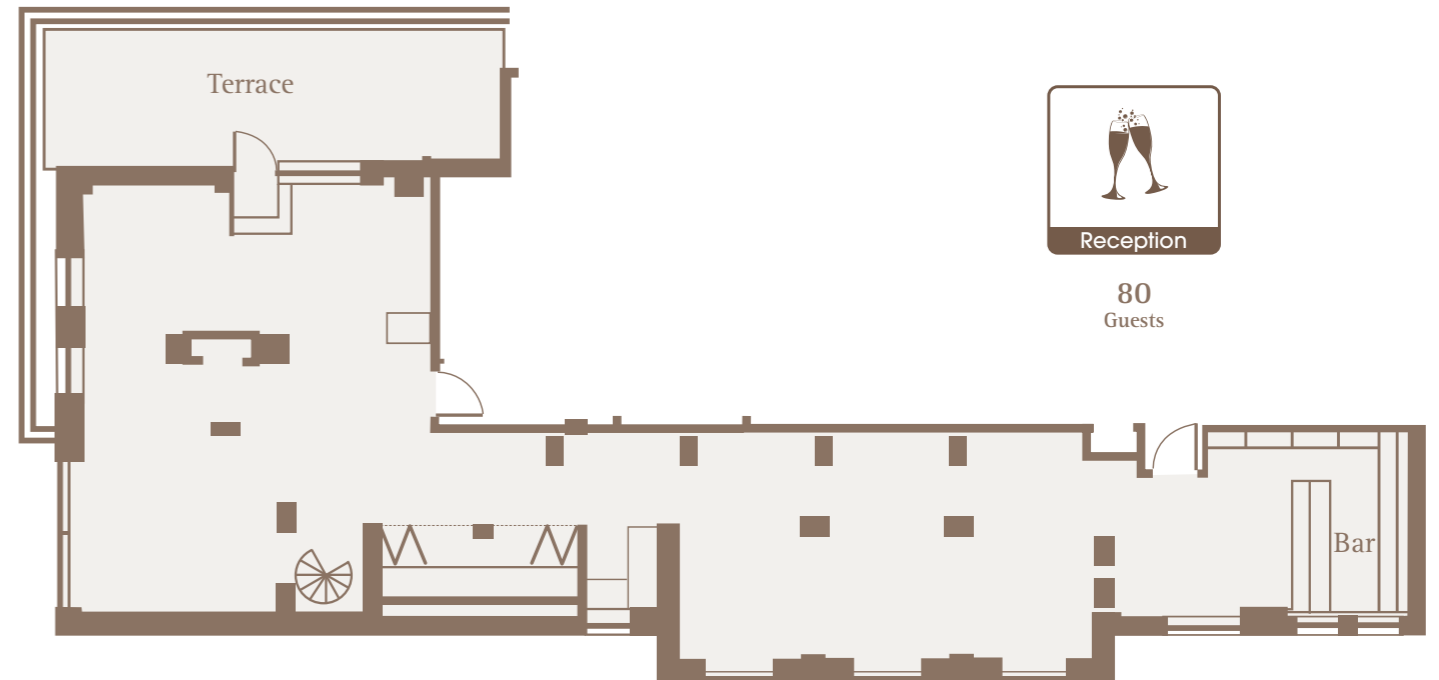
From 12ft to 90.2ft max

Total Area 138.4m<sup>2</sup> / 454ft<sup>2</sup>

### Terrace

Dimensions 9.6x2.9m / 31.5x9.6ft

Total Area 27.8m<sup>2</sup> / 91.3 ft<sup>2</sup>



The Loft boasts a dazzling selection of contemporary cocktails, bespoke beverages, fine wines and champagnes; all to be savoured in this stylish retreat amongst the rooftops of the city centre.

Exquisite views combined with decadent surroundings, has earned The Loft a reputation as one of Belfast's "must visit" bars for those who enjoy the finer things in life. The height of luxury in the heart of the city.

The Loft is available for private hire from Monday to Thursday, for groups of up to 80.

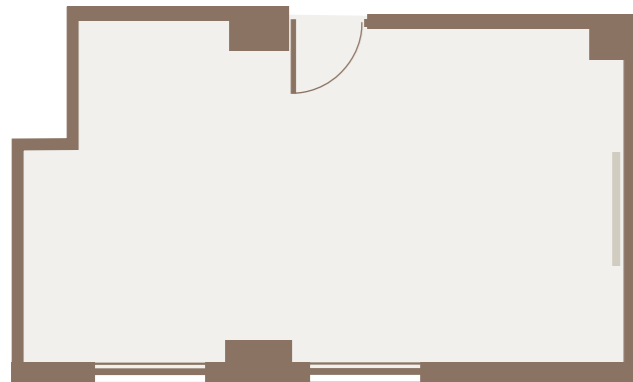






## Weaver Suite

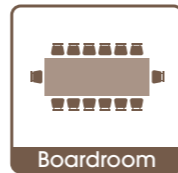
The Weaver Suite is our dedicated Boardroom located on the 7th Floor. It is in close proximity to The Loft, Ten Square's luxurious cocktail lounge, ideal for a refreshment breakout area. The Boardroom can accommodate 8 people for that important meeting and is equipped with a large screen, enabled for connection to laptops



### KEY FACTS

Dimensions 6.1x3.7m / 20x12.1ft

Total Area 22.5m<sup>2</sup> / 242ft<sup>2</sup>



Boardroom

8  
Guests

## Guest Accommodation



## Jaffe Penthouse

Perched high above City Hall, the Jaffe Penthouse boasts commanding views of the Belfast skyline and the hills beyond. Offering an impressive 900 sq.ft. of luxuriously appointed living space, the Suite is perfect for relaxing in and escaping the hustle of city life. The additional 800 sq ft of roof top terrace provides an enviable outdoor oasis, to take in the spectacular Belfast City landscape.







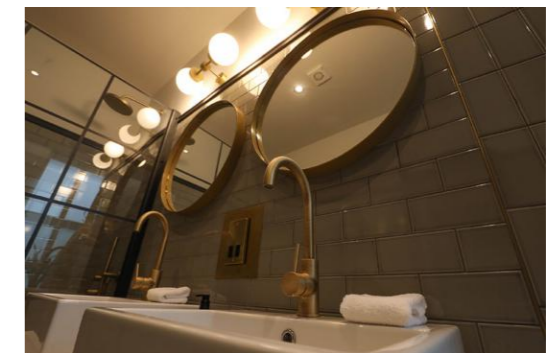
## Lanyon Suite

The exquisitely appointed Lanyon Suite at Ten Square is luxury personified. Romantically set amongst the rooftops in the heart of the City, it is an ideal location for sumptuous relaxation.



## Yorkshire Suite

The Yorkshire Suite, with its timeless character and charm, was designed to reflect the elegance of the Victorian period, wedded with a wealth of modern amenities. It boasts a luxurious King size bed, large living area and lavish bathroom, with deep roll top bath, walk-in rainfall shower and double sink vanity, with separate water closet.







## Executive King

The Executive King offers the very latest in contemporary City Centre luxury. Free Wi-fi, in-room entertainment, a King size bed and invigorating rainfall-style shower.



## Ten Square Double

The Ten Square Double is a winning combination of contemporary design and luxury facilities. Featuring extra comfortable double bed, rainfall-style shower, free Wi-Fi and excellent in-room entertainment.



## Classic Double

The Classic Double reflects its location in the original Victorian linen warehouse, with period features, high ceilings, sash windows and a wealth of modern facilities. Featuring an extra comfortable double bed, invigorating rainfall-style shower, free Wi-Fi and excellent in-room entertainment.







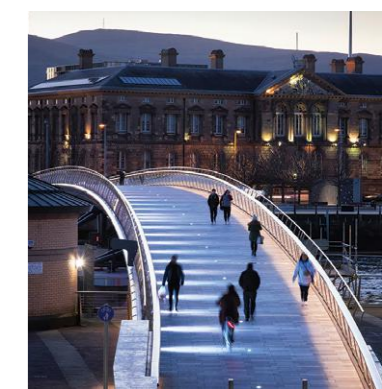
## Assembly Buildings Conference Centre



For our clients with large-scale event requirements, we work in partnership with the Assembly Buildings Conference Centre, who will facilitate conferences and exhibitions for over 300 attendees. A mere 4 minute walk away, Ten Square and the Assembly Buildings are the perfect partner venues of choice for conferences in the heart of the City.



- 1 Ten Square Hotel
- 2 Belfast City Hall
- 3 Victoria Square Shopping Centre
- 4 Castle Court Shopping Centre
- 5 Waterfront Hall
- 6 International Convention Centre
- 7 Assembly Buildings Conference Centre
- General Shopping Area







**Ten Square Hotel**

10 Donegall Square South,  
Belfast, BT1 5JD  
Northern Ireland  
T. 0044 (0)28 9024 1001  
E. [events@tensquare.co.uk](mailto:events@tensquare.co.uk)  
[www.tensquare.co.uk](http://www.tensquare.co.uk)



**Loughview Leisure Hotels**